

Pomeas TTC Standard Telecentric Lens Series

PMS-05TTC1422

1. Support 1MP camera or below
2. Low distortion, high telecentricity and deep depth of field, more suitable for high precision positioning and measuring
3. Telecentric design
4. Support 2/3" sensor
5. Standard C-Mount



Max.Sensor Size
2/3"

Magnification
0.47X

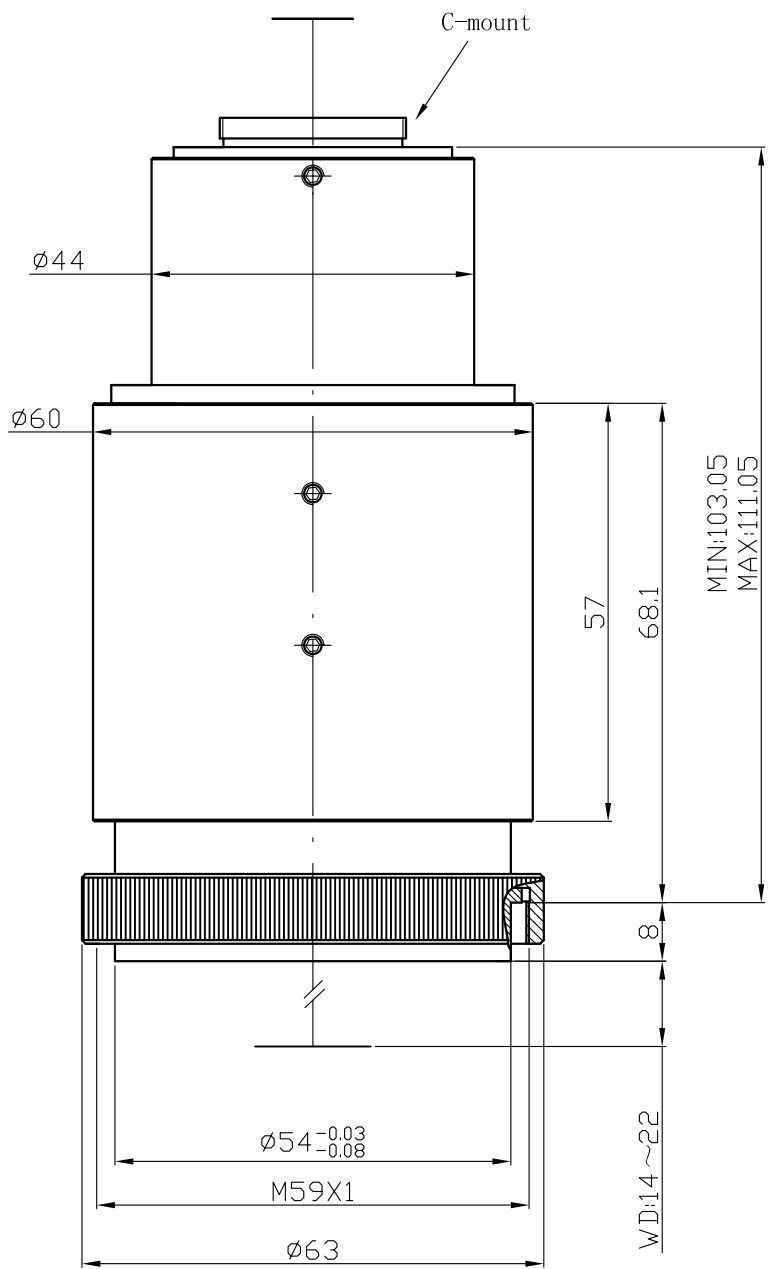
Working Distance
14-22mm

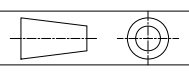
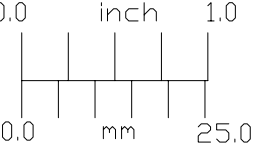
Resolution
7.14 μ m

C-Mount

| Code | | PMS-05TTC1422 |
|---------------------|--------|--|
| Magnification | | 0.47X |
| Field of View | 1/4" | 6.8mm \times 5.1mm |
| | 1/3" | 10.2mm \times 7.7mm |
| | 1/2.5" | 12.2mm \times 9.2mm |
| | 1/2.3" | 13.1mm \times 9.8mm |
| | 1/2" | 13.6mm \times 10.2mm |
| | 1/1.8" | 15.2mm \times 11.4mm |
| | 2/3" | 18.7mm \times 14.0mm |
| Working Distance | | 14mm-22mm |
| Resolution | | 7.14 μ m |
| F.No. | | 5 |
| TV Distortion | | 0.10% |
| Depth of Field*1 | | 1.81mm |
| N.A. | | 0.047 |
| Max.Sensor Size | | 2/3" |
| Mount | | C型 |
| Illumination | | -- |
| Working Temperature | | -10 $^{\circ}$ C \sim +50 $^{\circ}$ C |

*1: Theoretical calculating value(based on diameter of defocused spots is 0.04mm),in the reality application, take its 1/2 will gain the best effect.



| | | |
|--|---------------|---------------|
| Unit:mm | Scale | 1:1 |
|  | Name | PMS-05TTC1422 |
| 0.0 inch 1.0 | Date | 2014.6.10 |
|  | POMEAS | |