

Max.Sensor  
2/3"

Magnification  
0.088X

Working Distance  
120mm

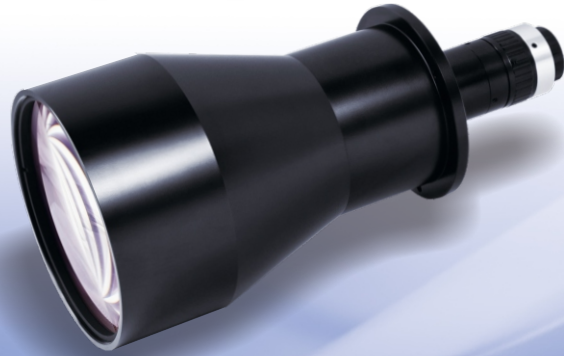
Field Of View  
Ø100mm

C-mount

## Pomeas Bi-Telecentric Lens DTC Series

### PMS-DTC23100

1. Bi-telecentric lens; Object side telecentricity is less than 0.04° ; Image side telecentricity is less than 0.1°; Almost no perspective distortion when measuring
2. Large FOV and high resolution; One inspection operation for big size object
3. Low distortion, high DOF



Code		PMS-DTC23100-A	PMS-DTC23100-B	PMS-DTC23100-C
Type		High Resolution	Medium Resolution	High DOF
Magnification		0.088X	0.088X	0.088X
Field Of View	1/4"	36.4mm×27.3mm	36.4mm×27.3mm	36.4mm×27.3mm
	1/3"	54.5mm×40.9mm	54.5mm×40.9mm	54.5mm×40.9mm
	1/2.5"	65.3mm×49.0mm	65.3mm×49.0mm	65.3mm×49.0mm
	1/2.3"	70.0mm×52.5mm	70.0mm×52.5mm	70.0mm×52.5mm
	1/2"	72.7mm×54.5mm	72.7mm×54.5mm	72.7mm×54.5mm
	1/1.8"	81.2mm×60.9mm	81.2mm×60.9mm	81.2mm×60.9mm
	2/3"	Ø 100.0mm	Ø 100.0mm	Ø 100.0mm
W.D.		120mm	120mm	120mm
F.No.		4	11.5	17.5
TV Distortion		-0.022%	-0.022%	-0.022%
DOF		16mm	30mm	45mm
N.A.		0.011	0.0038	0.0025
Central MTF%@50IP/mm		>85	>60	>39
Resolution		45.8µm	89µm	134.2µm
Max.Sensor Size		2/3"	2/3"	2/3"
Object Side Telecentricity		< 0.04°	< 0.04°	< 0.04°
Image Side Telecentricity		< 0.1°	< 0.1°	< 0.1°
Length		240mm	240mm	240mm
Diameter/Width		Ø116mm	Ø116mm	Ø116mm
Mount		C-mount	C-mount	C-mount
Illumination		--	--	--
Working Temperature		-10°C ~ +50°C	-10°C ~ +50°C	-10°C ~ +50°C

#### Optional Accessories



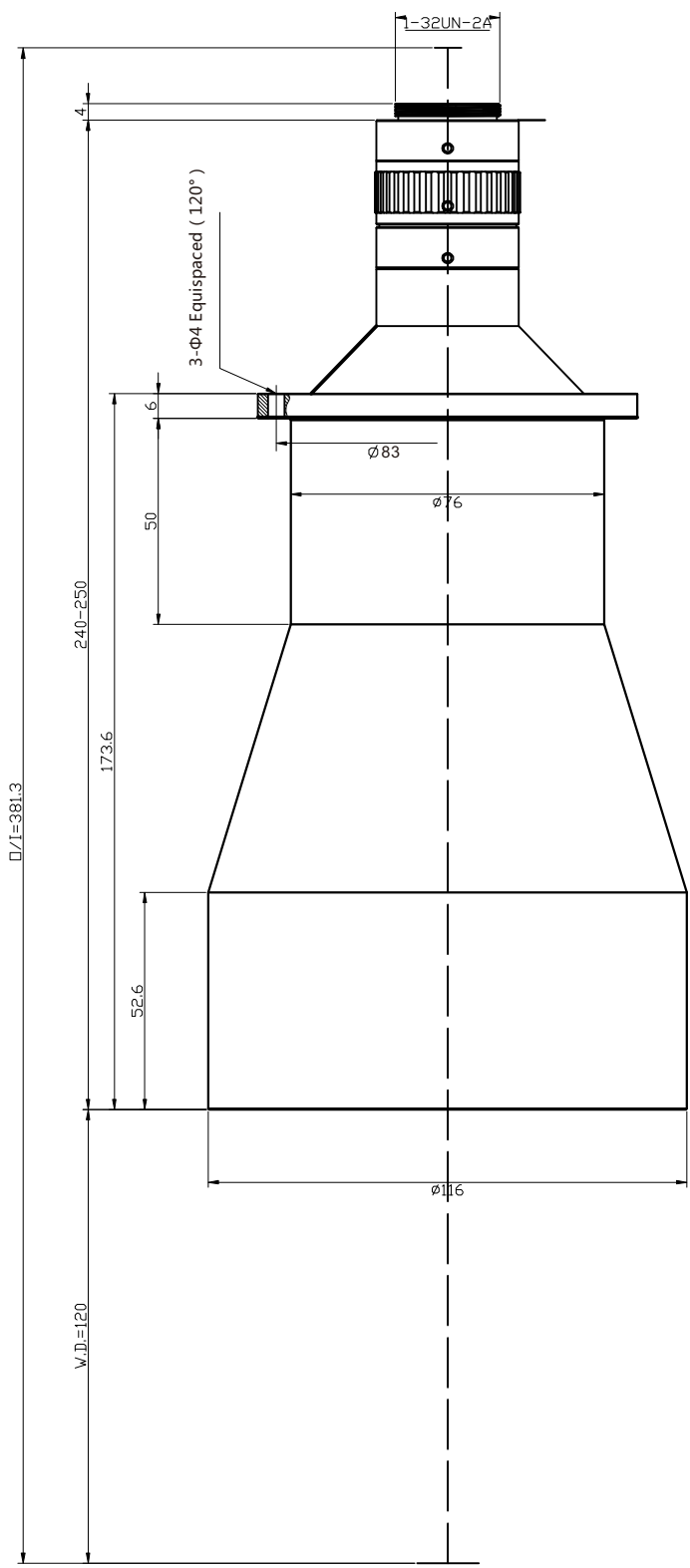
100 Telecentric Illumination  
PMS-LTD100



One-way Illumination Controller  
PMS-ICT



Muliti-way Illumination Controller  
PMS-LP12V1AX2



Unit:mm	Scale	2:1
	Name	PMS-DTC23100
0.0 inch 1.0	Date	2012.9.13
0.0 mm 25.0	<b>POMEAS</b>	